



LEADING MARKS Identifying Solutions

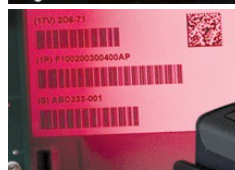
Leading Marks is an authorized distributor focusing on industrial identification solutions and the tools related in the manufacturing process that will allow customers to meet industry specifications. The advancement in marking technologies allows for:

- better legibility
- safer processes
- easy integration
- improved traceability

Laurie Barcaskey is the 3rd generation of one of the marking industry's most innovative families. She has 30+ years of experience as a sales executive and shop floor knowledge. She will work closely with you to understand your organization's requirements and desired goals to provide you with the best solution.

Many of the products we recommend for marking applications are only a part of products lines from our partner manufacturers. These companies core disciplines have allowed them to create niche opportunities for marking tools but their general product capabilities are solid, high-quality solutions that industry needs to improve efficiency, safety, and ultimately the bottom line. We find that organizations are seeking partners that can provide diversified solutions to operate efficiently and reduce costs.

Our combined knowledge of manufacturing processes, marking tools and related products is why Leading Marks is known for *Identifying Solutions*.



Marking Tools & Systems

We offer stand-alone applications and many which can be integrated into production lines. These tools produce a range of marks including alphanumeric text, logos, industrial symbols and 1D/2D bar codes. We also handle RFID and carry consumables to support your ongoing marking needs.

Direct-part marking with lasers, dot peen, hot-stamping, and impact marking.

Ink Marking. Available in varying colors and chemistries that allow marking on metals, plastics, cloth, wood, cardboard, and more.

Steel Stamps, Type & Dies. Traditional direct-part marking tools are available for individual stamps, holder & type arrangements and roll marking devices.

Labeling. We offer both print on-demand systems, and pre-printed labels supporting component and safety applications.

Tags & Nameplates. Tagging for temporary use or for secure identification in harsh-environments.

Related & Supporting Products

Vision Systems. Confirm parts during assembly, track thru production and complete inspections with hand-held or in-line options. Enhance bar codes and RFID use with cameras. Data collection is integratable for historical data about the components production.

Mechanical & Hydraulic Tools. Increase the efficiency and reliability of tasks like compressing joints or cable terminals and cutting or stripping wire. We offer a wide range of copper, aluminum, brass, stainless steel, and polyamide connectors.

Workholding. Provides safety and assists with securing the workpiece during the manufacturing and/or marking process. Ensures that results are consistent and can minimize change-over cycle times.

Soldering Irons. High-quality powerful soldering irons that bridge the gap between small pencil irons and large industrial soldering tools. With high watt density, they are well-matched to high speed production.

Filter and Extraction Systems. Keep employees safe where hazardous conditions exist from toxic fumes, gases and aerosols and particulates. Even non-toxic substances affect workplace air quality with dust and odor nuisance.

