

CO₂ Laser Solution



Laser Solution LS100

Innovative solutions for engraving and marking

www.gravograph.us

LS100

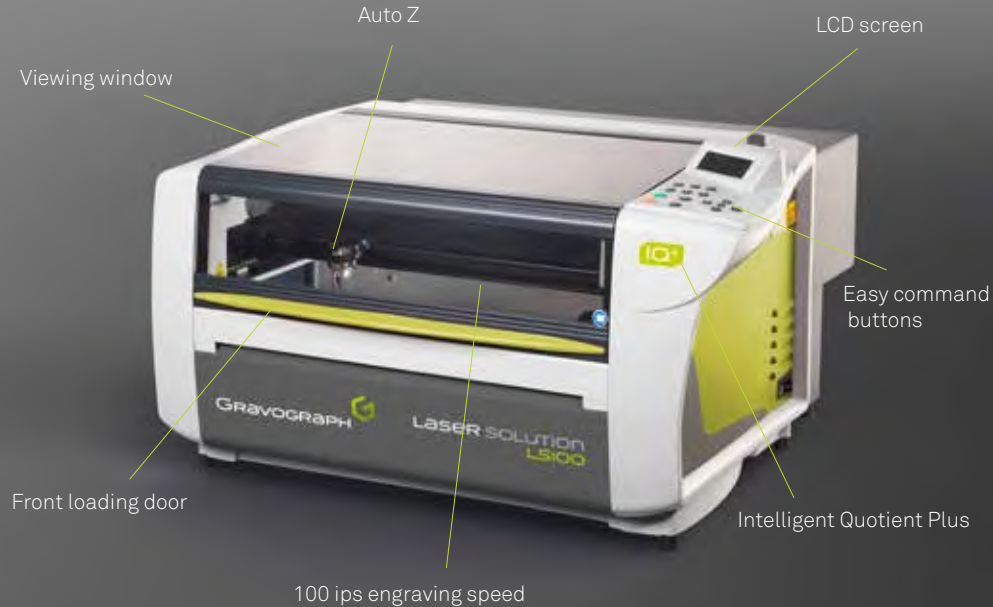
INNOVATIVE

Gravograph lasers from Gravotech are available with a host of unique and innovative features.

Intelligent laser pointer, programmable motorized table, synchronized fume extraction, variable flow air assist, ergonomic control panel and front loading door for easy loading & unloading, and automatic Z positioning.

These features make Gravograph lasers easy to use and productive.

Flexible engraving solution for a quick return on investment



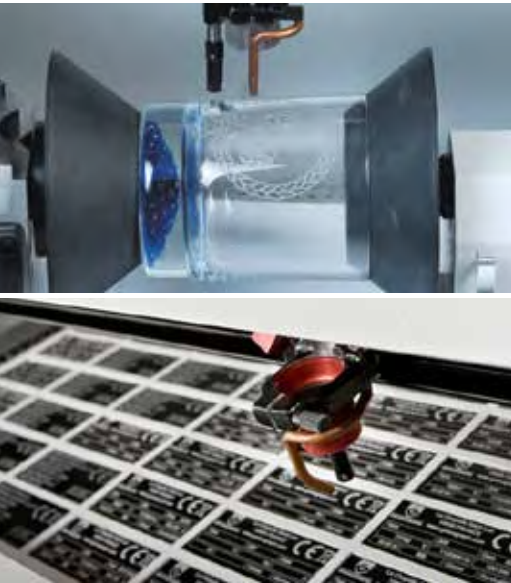
VERSATILE

The **LS100** is a **rugged CO₂** laser and can be set up in a **factory workshop, office** or **retail outlet**. Suitable for most marking, cutting and engraving applications including: trophies and awards, gifts, leather goods, acrylic, crystal and glassware, bar codes, data matrixs, photo marking and rubber stamp production.

EXCEPTIONAL SOFTWARE

LaserStyle™ graphic professional software comes standard with the LS100. The **best control software on the market**, LaserStyle™ is compatible with all pre-existing Gravograph solutions. An **open source driver** is provided for third-party graphic design software programs and the specially designed interface now **optimizes composition productivity**.

Upgrade your laser solution to **GravoStyle™** and unlock your laser's full engraving potential.



TECHNICAL SPECIFICATIONS

CHARACTERISTICS

- CO₂ Laser Source
- Machine Dimensions: 30.5 x 28.5 x 17.7 inches (755 x 725 x 450 mm)
- Product Weight: 95 lbs (43 kg)
- Shipping Weight: 145 lbs (66 kg)
- Engraving Area: 18 x 12 inches (460 x 300 mm)
- Z Clearance: 5.7 inches (145 mm)
- Max. Speed: 100 inches/second (2.54 meters/second)
- Wattage Range: 35, 40 and 60W
- Energy Supply: 100 & 240 V AC

STANDARD FEATURES

- LaserStyle™ graphic professional laser software
- Job complete alarm
- Integrated safety shut-off
- Air assist
- Auto Z
- Red laser pointer
- Point & shoot job registration
- Print & cut media registration

ADDITIONAL ACCESSORIES

- GravoStyle™ Software
- Base stand
- Various independent exhaust options and integrated device
- Alternate lenses: (1.5", 2", 3", 4" focal length)
- Vector cutting table
- Floating pin table
- Honeycomb cutting table
- Integrated compressor for air assist
- Rotary device to engrave round parts



Do not use to process PVC based material.
Never leave the machine operating unattended..

PERFORMANCE

The LS100 **increases productivity** with outstanding speeds up to **100 ips** (2.54m/sec). The LCD control panel is designed with **short cut functions** to save valuable time. Increase profitability by using the **Point & Shoot** feature to easily determine the engraving area of any object. No rulers needed! Easily cut printed media in 5 easy steps with the **Print & Cut** feature. See the Print & Cut leaflet for more information.

ERGONOMICS AND DESIGN

Quality laser with a backlit marking table. Front access for **effortless loading and adjusting** of items. A **red laser beam** allows for quick and **error-free** set up while the **auto focus** feature generates a precision mark. The fume and exhaust range, as well as the air assist, preserves your working environment and improves processing of many materials including rubber, leather and acrylic. The LS100 also offers **IQ+** or "Intelligent Quotient". The IQ+ at Gravotech was specifically designed for Gravograph machines. Offering **streamlined electronics, new-generation firmware** and **enhanced communication** between the engraver and user.



APPLICATIONS

Since 1938, Gravotech brands have been global leaders in the design, manufacturing, sales and support of innovative solutions for engraving, marking and artistic modeling.

www.gravograph.us



IDEAL FOR:

Marking, engraving and cutting a wide variety of materials, such as plastic, wood, acrylic, metals and glass.

- Rubber Stamps
- Personalization
- Signage
- Gift Items
- Awards
- Part Marking

(Glass and metal cannot be cut with a laser. Some metal may require a ceramic based additive to be marked)

The Gravotech Group represents a worldwide network present in 30 countries with more than 900 employees working around the clock to provide customers with exceptional permanent marking solutions. As a global leader in durable marking technologies such as engraving, laser, micro-percussion and scribing, we utilize our expertise to develop and market equipment, software and consumables for every application, from personalization to architectural signage and industrial part marking.



412-366-4733
sales@leadingmarks.com
www.leadingmarks.com

Gravograph, is a registered trademark of Gravotech, Inc.

2200 Northmont Parkway | Duluth, GA 30096
Toll Free: (1) 800.843.7637 | Tel. : (1) 770.623.0331 | Fax: (1) 770.495.3676
sales@us.gravotech.com

LS100_Leaflet_1215 - Gravotech, Inc. reserves all rights on improvement and modification of its products.
This document is not contractual. © Gravotech, Inc. - 2200 Northmont Parkway, Duluth, Georgia 30096 | USA

GRAVOGRAPH 

GRAVOTECH GROUP