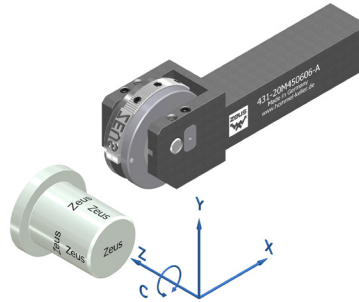


zeus® MARKING TOOL 431-45:

THE SOLID SOLUTION WITH EXCHANGEABLE SEGMENTS.

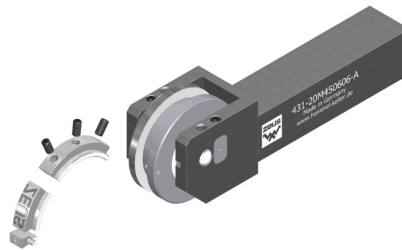
APPLICATION

- Spring-return marking system: suitable for multiple workpiece diameters.
- Precise positioning of characters on workpiece.
- Centre height corresponds to first marking point.



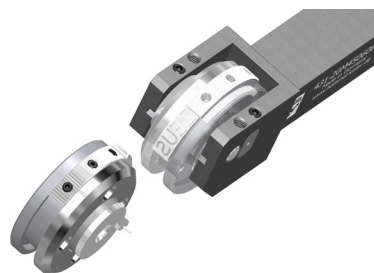
EFFICIENCY AND COST EFFECTIVENESS

- Suitable for multiple workpiece diameters.
- Desired depth is reached at fast speed.
- Full revolution of roll is not required.
- Flip the reading direction simply by flipping the segment roll 180 degrees.
- Flexible adaptation of texts thanks to simple replacement of segments.
- Flip the turning direction by replacing the return spring.
- Special surface hardening for increased wear resistance.



PROCESS RELIABILITY

- Text is 'rolled' onto the workpiece consistently.
- High dimensional accuracy.
- Precise positioning of the tool.
- 100 % reproducibility.



APPLICATION EXAMPLE:



APPLICATION:

Material: 1.1725
Lathe: Index G160

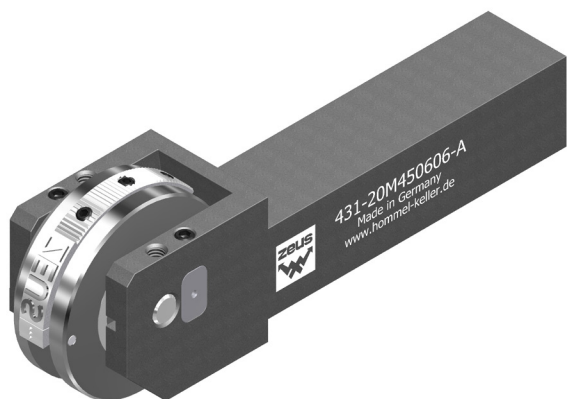
APPLICATION PARAMETERS:

Tool: 431-25M450606
Marking roll: No. 42 marking segment roll
Speed: $V_c = 25$ m/min
Feedrate: $F = 0.15$ mm
Special feature: Driving points only at the beginning and end.



zeus® MARKING TOOL 431-45:

THE SOLID SOLUTION WITH EXCHANGEABLE SEGMENTS.

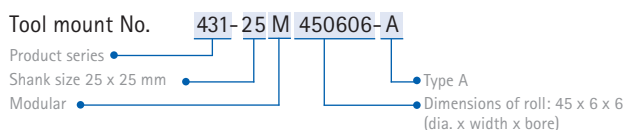


Type of lathe: Conventional and CNC – suitable for all common types of lathes. In particular:
 --> Universal/short-bed lathes
 Lathing/milling centres
 --> Multi-spindle lathes

Application: --> Spring-return system: Marking is independent of workpiece diameter.
 --> Max. impression depth is 0.15 mm (relative to Ø).
 --> Max. character height: 5 mm (angle $\alpha = 90^\circ$).
 --> Standard roll width: 6 mm; different widths are possible (up to 7 mm).

Features: --> Centre height is integrated in tool mount.
 --> A screw secures axle pin and plate for a quick replacement of the marking roll.
 --> To flip the reading direction flip the roll 180 degrees.
 --> Flip the turning direction by replacing the return spring.
 --> Special surface hardening for increased wear resistance.

ORDER EXAMPLE:



For marking roll No. 42:



TOOL TYPES:

Tool mount No.	a mm	b mm	c mm	d mm	e mm	f mm	Dimensions Marking roll mm $\varnothing \times w \times b$	Spare parts Axle pins	Spare parts Spiral springs
431-16M450606-A	16	16	134	30	54	45	45 x 6 x 6	21BHR0706	06TER0422 (l/h installation), 06TER0423 (r/h installation)
431-20M450606-A	20	20	134	30	54	45	45 x 6 x 6	21BHR0706	06TER0422 (l/h installation), 06TER0423 (r/h installation)
431-25M450606-A	25	25	134	30	54	47.5	45 x 6 x 6	21BHR0706	06TER0422 (l/h installation), 06TER0423 (r/h installation)

