



LEADING MARKS

Identifying Solutions

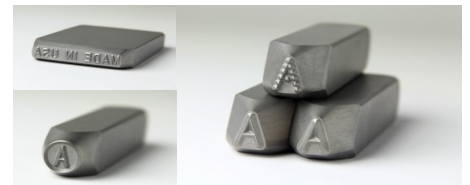
Contact Us Today
Call: 412-366-4733
www.leadingmarks.com

Traditional Marking Equipment

Leading Marks distributes traditional marking products for low-volume, low budget applications. The products provided are made for rugged applications where quality is key, and safety a priority.

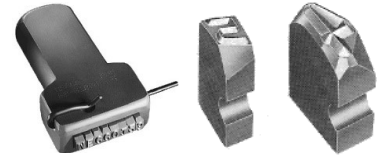
Hand Stamps

High quality steel stamps continue to be a common staple in the industrial environment where deep, low volume marks are needed especially for cast, forged and fabrications. Whether it is single character hand stamps, multi-character line stamps, logos or symbols you can count on stamps that make a striking difference.



Type

Steel type comes in many shapes and sizes and is often dictated by the machine holder and application for which it will be used. Options include plain body type, slotted type (commonly referred to as groove type), and embossing type. Brand specific types such as Hilti, Matthews, Pannier, Columbia, Automator, Pryor can be made to match your current supplier and most likely at a savings. Steel type is made for light duty packaging requirements, as well as heavy duty forging processes.



Embossing type is an integral part of **Leading Marks Boss Buddy** package for the foundries.

Hammers

Safety is important with marking hammers. With radius heads, the marking hammers Leading Marks provides help deflect foul blows. Inspection hammers can come in cut-letter style or with interchangeable inserts. Standard O. E. Engineers Hammers are also available in a range of sizes from ¼ lbs. up to 6 lbs.



Engraved Marking Dies

Engraved marking dies come in a variety of shapes and sizes to accommodate stand-alone marking requirements as well as progressive manufacturing operations. The marking detail is specific to the product being made factoring in material, depth of engraving, and industry stress-critical requirements.

Rubber Type & Stamps

Rubber rib type is commonly used in hand-held holders and in-line roll coders in the lumber, packaging and shipping industries – but not limited to these. Traditional uses are signature stamps, date codes and band stamps for offices, shipping departments and quality inspection.

The type of rubber and ink used is determined by the application and the substrate to be marked.



Hand Stamp Holders

Make safety a priority in hand stamping processes by using a hand stamp holder. A variety of standard single character hand stamp holders are available to insure the operator's hands are protected. Multiple character plate marking holders can be made for single or multiple line marking, and offer improved legibility by aligning the stamps for individual striking of the stamps.

Warnings

Wear safety goggles. Strike stamps squarely. Avoid glancing blows. Never strike these tools against another striking tool. Striking hard surfaces can cause chipping, possibly resulting in eye injury. Discard immediately if chipping, mushrooming or denting occurs.

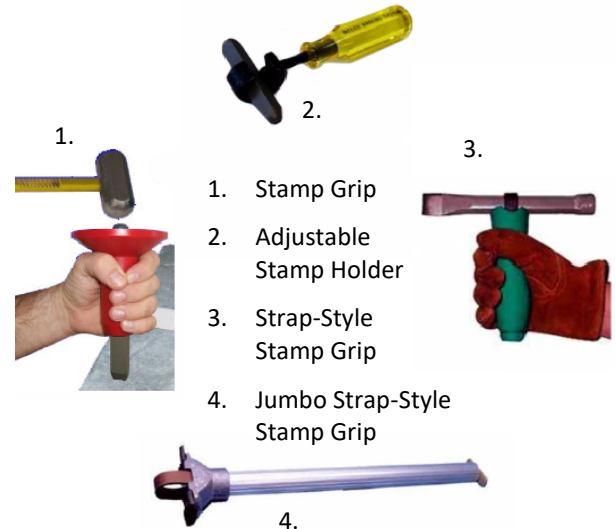


Plate Marking Holders

Plate marking holders are great for consistent alignment of markings requiring steel stamps. These holders can be designed for single or multiple line arrangements to suit common stamp blank sizes. Special hammers help avoid shadowing and allow best marking results.

Great for marking steel plates, tubes, pipes and other large fabrications!



Marking Machines for stand-alone & In-line Use

- Impact Presses
- Roll Marking
- Hot Stamping
- Ink Marking
- Direct Part Marking
- Ink Marking
- Thermal Transfer

Marking Tools

- On-demand Labeling
- Preprinted Labels
- Branding and Soldering
- Tags, Nameplates and Barcoded Devices

Mobile Apps for Traceability

- Data Entry
- Inspections
- Reporting



LEADING MARKS Identifying Solutions

Leading Marks is the partner to choose whether it is traditional marking requirements, or upgrades for more automated systems for direct-part marking, ink marking, and labeling requirements. Applications for traceability are the priority of many industries in order to reduce risk and maintain industry standards. Other common applications Leading Marks has assisted with are for product identification, asset identification, warnings and locations.

The focus of Leading Marks is to help customers to reduce costs, improve legibility and enhance safety. Leading Marks works closely with the customer to understand the specific requirements and desired goals to provide the best result.

Contact Us Today

Web: leadingmarks.com

Phone: 412-366-4733

email: laurie@leadingmarks.com

